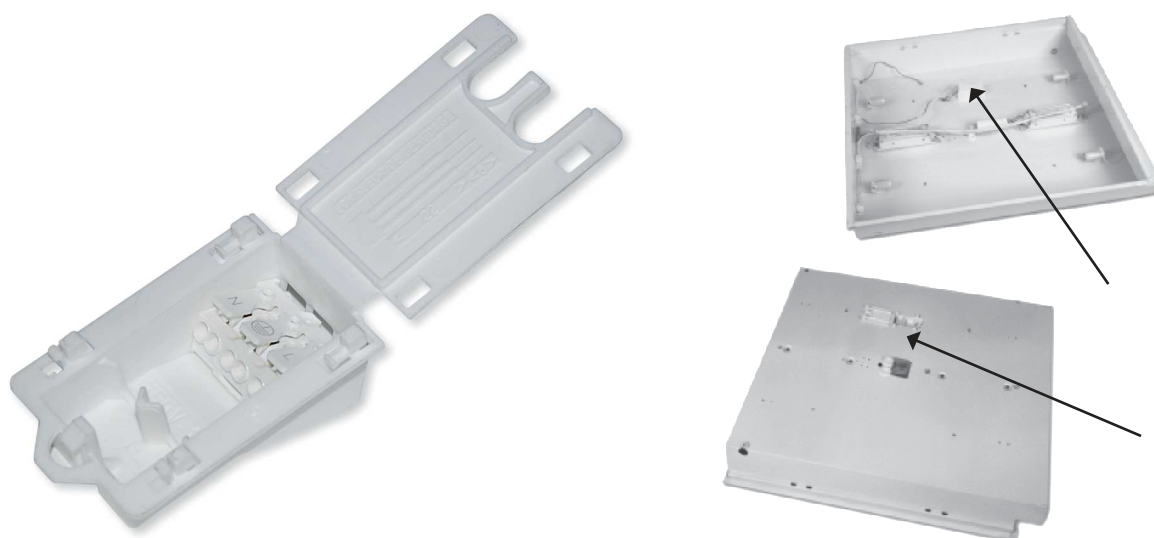


ISODOM® BRF

CERTIFIED BY VDE & BY LCIE — PATENTED PRODUCT

ISODOM® BRF 3P (WITHOUT TERMINAL BLOCK)
 ISODOM® BRF N.2A (WITH BJB TERMINAL BLOCK)
 Packing unit 250

000097 783506
 P00097 783508



PURPOSE

- Enables direct connection of fluorescent lighting to the mains from the outside without having to disassemble the luminaire

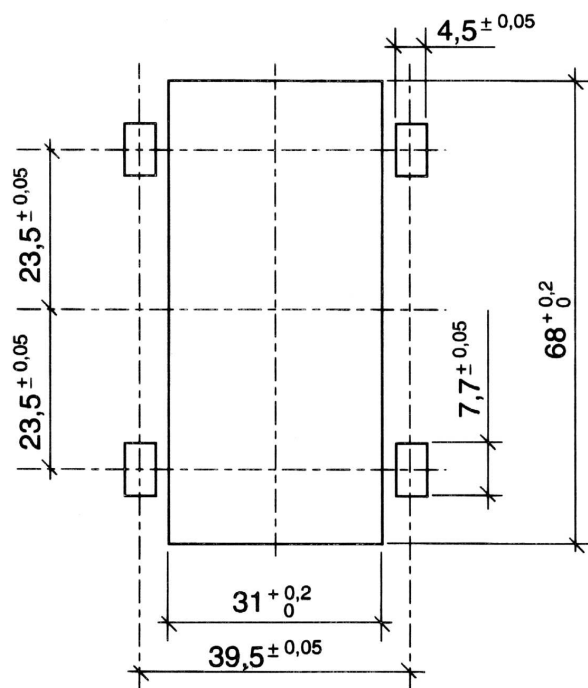
FEATURES

- Made of injection moulded insulating thermoplastic that meets the incandescent wire test requirements
- Suitable for continuous use at 125°C
- Consists of a box + cover assembly.
- A 3-pole automatic terminal block can be selected among different suitable types
- Colour: white
- Overall dimensions of the box: 71 x 48 x 33 mm

ADVANTAGES

- Easy to install without any tools without any force in four steps
- Ready to connect
- For the MANUFACTURER the ISODOM® BRF represents a positive accomplishment of his product.
- For the ELECTRICIAN the ISODOM® BRF considerably simplifies connection of luminaire to the mains supply in a simple and rapid way without having to dismantle neither tubes nor louvers
- Internal and external connection is made using an automatic terminal block (several different types are compatible)
- Allows DIRECT LOOPING-IN in conformance with installation rules

CONNECTION BOXES

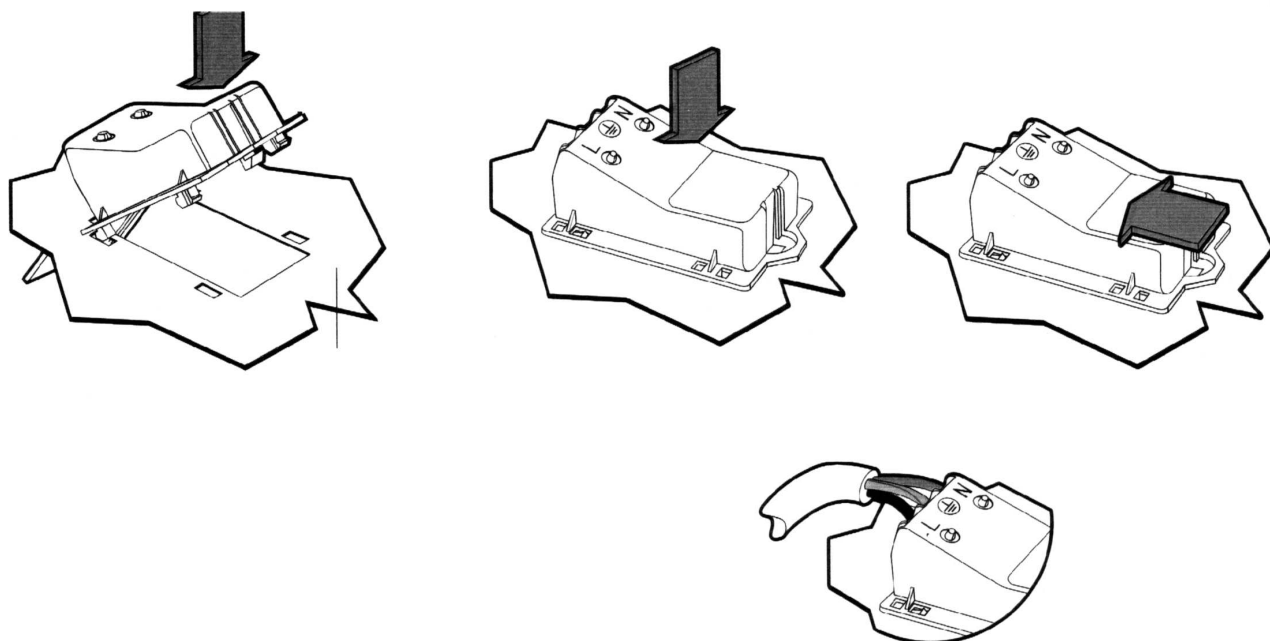


ép. tole = 0,5 à 0,9 mm maxi

- Cut-out Drawing for 3 poles ISODOM® BRF

ISODOM® BRF

Installation without any tools without any force realized in four steps :



INSTALLATION

- 1 - Vertically insert the box with its cover completely open into the sheet cut-out made for this purpose.
- 2 - Turn the box a quarter of a turn and guide it towards the front of the cut-out.
- 3 - Position the fixing clips in the four holes of the cut-out and insert them by applying vertical force on the box.
- 4 - Then apply horizontal force to the box in order to completely engage the fixing clips

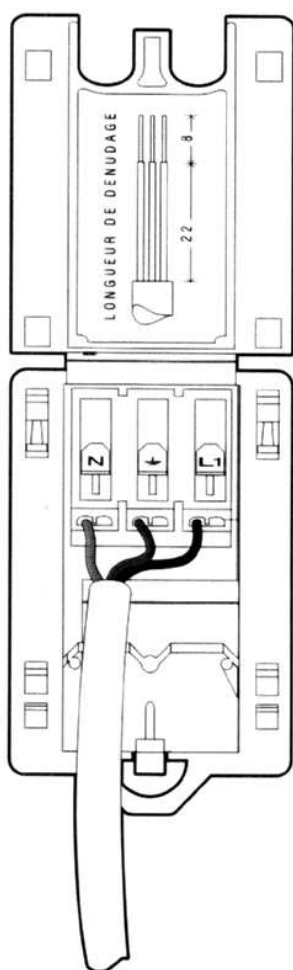
It is recommended to carry out this operation at ambient temperature > 5°C the elastic limit (flexion) of the material varying with the temperature.



ISODOM® BRF

The ISODOM® BRF allows to make further connections directly from one luminaire to another by looping the cable from one ISODOM® BRF to the next in complete conformance with the installation instructions

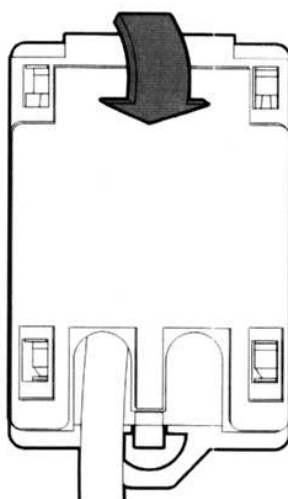
CONNECTION OF LUMINAIRE



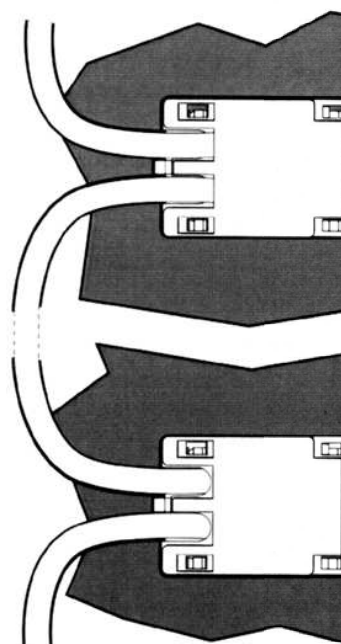
1 - Remove insulation cover from cable following sketch.

2 ... Press each connector directly into the **AUTOMATIC** terminal block (N ⊕ L).

3 ... Press the cable into the fixing mount



4 ... Close the cover by clipping in.



CONNECTION BOXES

ISODOM® BRF 5 PÔLES

CERTIFIED BY VDE & BY LCIE – PATENTED PRODUCT

ISODOM® BRF 5P PSF (WITHOUT TERMINAL BLOCK)

000004 840705

ISODOM® BRF 5P N°2 (WITH BJB TERMINAL BLOCK)

P00004 840704

Packing unit 150



PURPOSE

- Enables direct connection of fluorescent lighting to the mains from the outside without having to disassemble the luminaire

FEATURES

- Made of injection moulded insulating thermoplastic that meets the incandescent wire test requirements
- Suitable for continuous use at 125°C
- Consists of a box + cover assembly
- A 5-poles automatic terminal block can be selected among different suitable types
- Colour: white
- Overall dimensions of the box: 71 x 48 x 33 mm

ADVANTAGES

- Easy to install without any tools without any force in four steps
- Ready to connect
- For the MANUFACTURER the ISODOM® BRF represents a positive accomplishment of his product
- For the ELECTRICIAN the ISODOM® BRF considerably simplifies connection of luminaire to the mains supply in a simple and rapid way without having to dismantle neither tubes nor louvers
- Internal and external connection is made using an automatic terminal block (several different types are compatible)
- Allows DIRECT LOOPING-IN in conformance with installation rules