



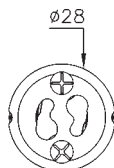
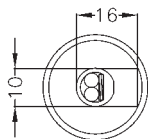
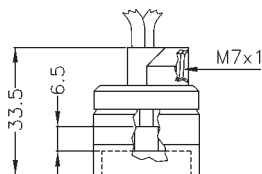
Portalampane a tensione di rete

Main voltage lampholders

## H6Z + CABLE + CAP



	GU10-GZ10		IP20		
	2A 250V				
	250°C				



Corpo STEATITE, fondello in LCP, innesto rapido dei cavi, fissaggio con viti, fornito con cavi e CAP50 assemblati, lunghezza e tipo cavi su richiesta. Utilizzabile in apparecchi in classe II se dotato di cavi in doppio/triplo isolamento in accordo alla CEI EN 60598-1 ultima edizione.

*Housing STEATITE, LCP cover plate, snap-in fixing, screw fixing, supplied with cable and CAP50 assembled, wire quality and length on special request. May be used on class II luminaires if with double/triple insulation cable according to CEI EN 60598-1 last ed.*

### EA srl

Strada degli Angariari, 25  
Zona Ind. Rovereta  
47891 Falciano  
Repubblica di San Marino

Tel. 0549.905.778  
Fax 0549.908.055  
From other countries  
(++)378.905.778/908.055

web: [www.easrl.com](http://www.easrl.com)  
mail: [ea@easrl.com](mailto:ea@easrl.com)

