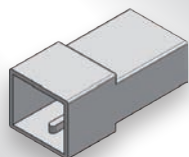


● 01

Connettore isolante femmina.

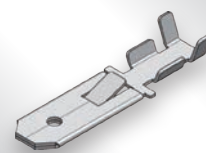
*Female insulating connector.*



● 02

Terminale maschio.

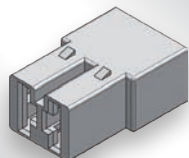
*Male terminal.*



● 03

Connettore isolante maschio.

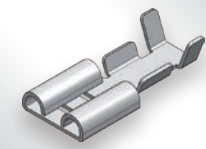
*Male insulating connector.*



● 04

Terminale femmina.

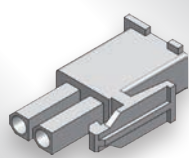
*Female terminal.*



● 05

Mini Connettore isolante maschio.

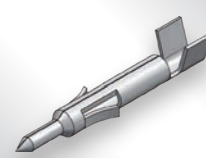
*Male insulating mini connector.*



● 06

Mini terminale maschio.

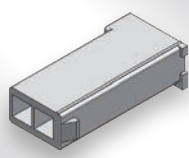
*Male mini terminal.*



● 07

Mini connettore isolante femmina.

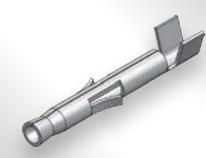
*Female insulating mini connector.*



● 08

Mini terminale femmina.

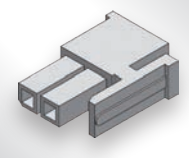
*Female mini terminal.*



● 09

Micro Connettore isolante maschio.

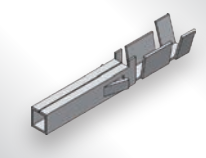
*Male insulating micro connector.*



● 10

Micro terminale femmina.

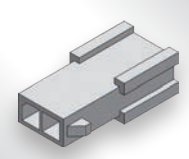
*Female micro terminal.*



● 11

Micro connettore isolante femmina.

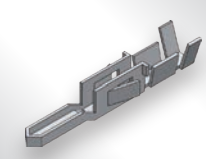
*Female insulating micro connector.*



● 12

Micro terminale maschio.

*Male micro terminal.*



● 13

Terminale e puntale in ottone.

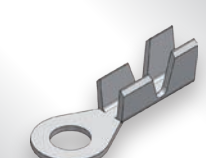
*Brass point connection and terminal.*



● 14

Terminale ad occhiello.

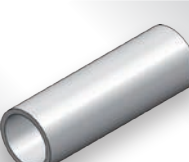
*Ring terminal.*



● 15

Guaine.

*Sheath.*



● 16

Spezioni di cavo, sguainatura su richiesta.

*Cable cutting and unsheathing on request.*

