



Portalampane a tensione di rete

Main voltage lampholders

H2



R7s



90/250°C

APPROVAZIONI
ADDESIONI



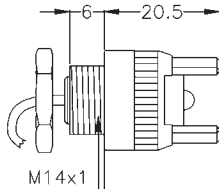
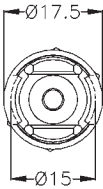
6A 250V



IP20



300°C



102.4mm(100/150/250W)

140.8mm(150/200/300/500W)

Corpo STEATITE, supporto esterno in ottone nichelato, dado incluso, lunghezza e tipo cavo su richiesta. Utilizzabile in apparecchi in classe II se dotato di cavi in doppio/triplo isolamento in accordo alla CEI EN 60598-1 ultima edizione.

Housing STEATITE, nickel-plated brass external housing, nuts included, alternative wire quality and length on special request. May be used on class II luminaires if with double/triple insulation cable according to CEI EN 60598-1 last ed.

EA srl

Strada degli Angariari, 25
Zona Ind. Rovereta
47891 Falciano
Repubblica di San Marino

Tel. 0549.905.778
Fax 0549.908.055
From other countries
(++378.905.778/908.055

web: www.easrl.com
mail: ea@easrl.com

