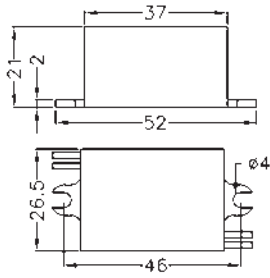
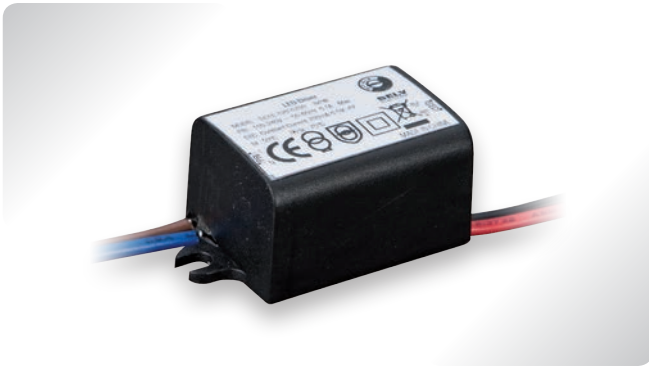


DRN0700003.050**700mA****Driver LED 350/500/700mA**
350/500/700mA LED drivers**● Descrizione / Description**

LED driver corrente costante 700mA - 3W
Case resinato.
Cavi PVC-AWG22, lunghezza cm 20.

*Constant current LED driver: 700mA - 3W.
Resinate case.
Cm 20, PVC-AWG22 cables.*

● Temperatura / Temperature

t_c : +75°C / t_a : +50°C



Codice Code	Tensione di ingresso Input voltage (Vac)	Uscita / Output (CC)	Uscita / Output (Vdc)	Load Range (W)
DRN0700003.050	100~240V (50/60Hz)	700mA	0,5~4V	0,3~2,8W