

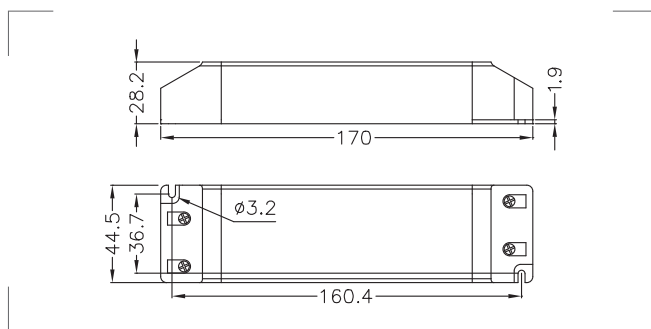
● **Descrizione / Description**

Alimentatore LED 12V - 5,83A - 70W.
 Classe II, morsetti a vite.

LED power supply: 12V - 5.83A - 70W.
 Class II, screw terminals.

● **Temperatura / Temperature**

t_c : + 80°C / t_a : + 45°C



Codice Code	Tensione di ingresso Input voltage (Vac)	Uscita / Output (Vdc)	Uscita / Output (A)	Max Load (W)
ALN012075.242	200~240V (50/60Hz)	12V	5,83A	70W