

● **Descrizione / Description**

Modulo LED 1,4W; colore grigio argento, fissaggio a scatto, con riflettore incorporato, cavo cm 120 con connettore maschio AMP.  
Fornito con supporto Ø 30 mm x h 10 mm per fissaggio con viti.

LED module 1.4W; silver grey colour, push-in fixing, with built-in reflector, cable cm 120 with AMP male connector.  
Supplied with support ring Ø 30 mm x h 10 mm for screw fixing.

● **Temperatura e dissipazione / Temperature and dissipation**

Tmax: +65° / t<sub>a</sub>: -20°C ~ +40°C  
Auto-dissipato in aria con t<sub>a</sub><40°C / Self-dissipated with t<sub>a</sub><40°C

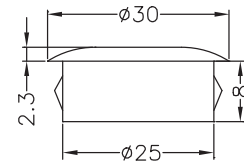
● **CCT & R<sub>a</sub>**

Ⓜ Bianco Caldo/Warm White: 3000~3500K



Max Power 1.4W

A+



Codice Code	Colore del LED LED colour	Driver LED CC CC LED driver	Potenza massima Max power (W)	V <sub>F</sub> (V) Min/Max	Flusso luminoso massimo Max light flux (lm)
03MA01W.1K005	Ⓜ	350mA	1,4	3,2~4,0	110